



WHAT TO EXPECT FROM TREATMENT WITH BLENREP

FOR APPROPRIATE ADULTS
WITH MULTIPLE MYELOMA:
BLENREP

What is BLENREP?

BLENREP is a prescription medicine used to treat adults with multiple myeloma who have received at least 4 prior medicines to treat multiple myeloma, **and** their cancer has come back or did not respond to prior treatment. It is not known if BLENREP is safe and effective in children.

BLENREP is approved based on patient response rate. Studies are ongoing to confirm the clinical benefit of BLENREP for this use.

IMPORTANT SAFETY INFORMATION

What is the most important information I should know about BLENREP?

Before you receive BLENREP, you must read and agree to all of the instructions in the BLENREP Risk Evaluation and Mitigation Strategy (REMS). Before prescribing BLENREP, your healthcare provider will explain the BLENREP REMS to you and have you sign the Patient Enrollment Form.

BLENREP can cause serious side effects, including:

Eye problems. Eye problems are common with BLENREP. BLENREP can cause changes to the surface of your eye that can lead to dry eyes, blurred vision, worsening vision, severe vision loss, and corneal ulcer. Tell your healthcare provider if you have any vision changes or eye problems during treatment with BLENREP.

Please see **IMPORTANT SAFETY INFORMATION** continued throughout and accompanying full Prescribing Information, including **BOXED WARNING** and Medication Guide.

 **BLENREP**
belantamab
mafodotin-blmf
for injection 100 mg

What is BLENREP?

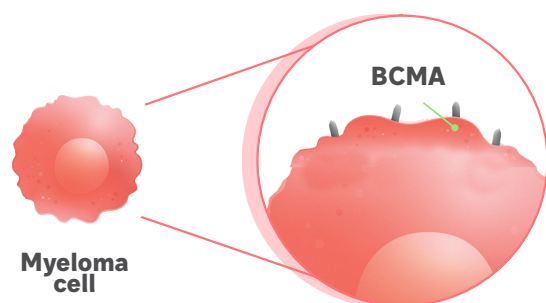


BLENREP is a prescription medicine used to treat multiple myeloma in adults whose cancer has come back or did not respond to prior treatment and who have already received at least 4 prior therapies, including at least 1 therapy from each of these classes of drugs:

- an immunomodulatory agent (for example, Revlimid [lenalidomide], Pomalyst [pomalidomide], or Thalomid [thalidomide])
- a proteasome inhibitor (for example, Velcade [bortezomib], Kyprolis [carfilzomib], or Ninlaro [ixazomib])
- an anti-CD38 monoclonal antibody (for example, Darzalex [daratumumab])

BLENREP is approved based on patient response rate. Studies are ongoing to confirm the clinical benefit of BLENREP for this use.

Ask your healthcare provider to ensure you have received at least 1 of each of these treatments.



BLENREP is an antibody-drug conjugate (ADC) targeting B-cell maturation antigen (BCMA). It works in unique ways to help fight multiple myeloma.

BLENREP is the first and only ADC that targets BCMA, commonly seen on myeloma cells. It is possible that healthy cells may also be affected.

BCMA is a protein found on the surface of myeloma cells in all patients with multiple myeloma.

BCMA is found on healthy plasma cells and cancerous myeloma cells alike. BCMA helps fuel cell growth and protects cells from dying. BCMA is found at higher levels on myeloma cells.

IMPORTANT SAFETY INFORMATION (CONT'D)

- Your healthcare provider will send you to an eye specialist to check your eyes before you start treatment with BLENREP, prior to each dose of BLENREP, and for worsening symptoms of eye problems.
- Even if your vision seems fine, it is important that you get your eyes checked during treatment with BLENREP because some changes can happen without symptoms and may only be seen on an eye exam.
- You should use preservative-free lubricant eye drops at least 4 times per day during treatment with BLENREP as instructed by your healthcare provider.
- You should use caution when driving or operating machinery as BLENREP may affect your vision.
- Avoid wearing contact lenses during treatment with BLENREP unless directed by your eye specialist.

Decrease in platelets (thrombocytopenia) is common with BLENREP, and can also be serious. Platelets are a type of blood cell that help your blood to clot. Your healthcare provider will check your blood cell counts before you start treatment with BLENREP and during treatment. Tell your healthcare provider if you have bleeding or bruising during treatment with BLENREP.

Please see IMPORTANT SAFETY INFORMATION continued throughout and accompanying full Prescribing Information, including BOXED WARNING and Medication Guide.

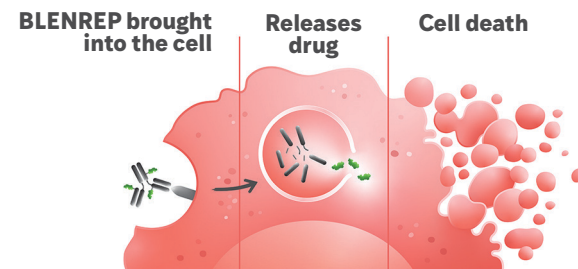
How does BLENREP work?

BLENREP works in different ways to help your body fight multiple myeloma:

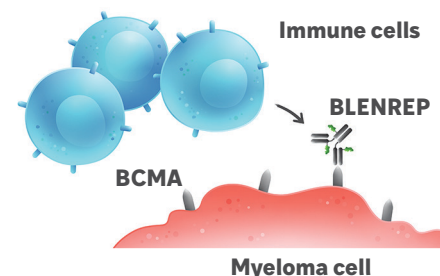


BLENREP identifies cells that express BCMA, such as cancerous myeloma cells, and attaches directly to the BCMA protein. BLENREP is brought into the cancerous myeloma cells, releasing medication resulting in cell death.*

*It is possible that healthy cells will be affected.



Once BLENREP attaches, the antibody part of the ADC attracts your body's own immune system to recognize the cancerous myeloma cells and attack them.



*BLENREP, AN OPTION AFTER RELAPSE, WORKS IN DIFFERENT WAYS,
INCLUDING USING YOUR BODY'S OWN IMMUNE SYSTEM*

IMPORTANT SAFETY INFORMATION (CONT'D)

Infusion-related reactions are common with BLENREP and can also be serious. Tell your healthcare provider or nurse right away if you get any of the following signs or symptoms of an infusion-related reaction while receiving BLENREP:

- chills or shaking
- redness of your face (flushing)
- itching or rash
- shortness of breath, cough, or wheezing
- swelling of your lips, tongue, throat, or face
- dizziness
- feel like passing out
- tiredness
- fever
- feel like your heart is racing (palpitations)

Please see **IMPORTANT SAFETY INFORMATION** continued throughout and accompanying full Prescribing Information, including **BOXED WARNING** and Medication Guide.

How was BLENREP studied?



BLENREP was studied in patients with relapsed or refractory multiple myeloma

Two doses of BLENREP were evaluated (studied) in patients with **relapsed or refractory multiple myeloma**. The results below only include the 97 patients who received the recommended dose of BLENREP. About 25% of these patients had high-risk cytogenetics [presence of t(4;14), t(14;16), or 17p13del mutations]. These patients had received prior treatment for multiple myeloma, including an anti-CD38 antibody, and were no longer responding to an immunomodulatory agent and to a proteasome inhibitor.

Approximately **1 in 3 PATIENTS (31%)**  experienced a response to treatment

Response was seen in patients whose cancer had returned or progressed multiple times. Patients in the trial had received at least 3 and up to 21 prior treatment regimens. Half the patients had received 7 or fewer treatments.

IN PATIENTS WHO RESPONDED:

BLENREP worked in about

6 WEEKS

BLENREP response lasted

AT LEAST 6 MONTHS
for most patients (73%)

BLENREP showed a very good partial response or better

IN 60% OF PATIENTS
(18 out of 30 patients)

In the 97 patients evaluated, 2 patients (2%) had a stringent complete response, 1 (1%) had a complete response, 15 (15%) had a very good partial response, and 12 (12%) had a partial response. These categories describe how well a patient responded to BLENREP.

IMPORTANT SAFETY INFORMATION (CONT'D)

The most common side effects of BLENREP include vision or eye changes such as findings on eye exam (keratopathy), decreased vision or blurred vision, nausea, low blood cell counts, fever, infusion-related reactions, tiredness, and changes in kidney or liver function blood tests.

Tell your healthcare provider right away if you get new or worsening unexplained signs or symptoms of lung problems, including shortness of breath, chest pain, and cough.

Before receiving BLENREP, tell your healthcare provider about all of your medical conditions, including if you:

- have a history of vision or eye problems.
- have bleeding problems or a history of bleeding problems.
- are pregnant or plan to become pregnant. BLENREP can harm your unborn baby. **Females who are able to become pregnant:** Your healthcare provider may do a pregnancy test before you start treatment with BLENREP. You should use effective birth control during treatment with BLENREP and for 4 months after the last dose. Talk to your healthcare provider about birth control methods you can use during this time. Tell your healthcare provider if you become pregnant or think you may be pregnant during treatment with BLENREP. **Males with female partners who are able to become pregnant** should use effective birth control during treatment with BLENREP and for 6 months after the last dose.

Please see **IMPORTANT SAFETY INFORMATION** continued throughout and accompanying full Prescribing Information, including **BOXED WARNING** and Medication Guide.

What were the most common side effects of BLENREP in the clinical trial?

The most common side effects ($\geq 20\%$) seen in patients who received the recommended dose of BLENREP were vision or eye changes such as findings on an eye exam (keratopathy*), decreased vision or blurred vision, nausea, low blood cell counts, fever, infusion-related reactions, tiredness, and changes in kidney or liver function blood tests.

These are not all the possible side effects of BLENREP.

Of all the side effects, some led to treatment interruption, dose reduction, and treatment discontinuation:

- 54% of patients experienced a treatment interruption. Side effects that led to an interruption in more than 3% of patients included keratopathy (47%), blurred vision (5%), dry eye (3.2%), and pneumonia (3.2%)
- 29% of patients experienced a dose reduction. Side effects that led to dose reduction in more than 3% of patients included keratopathy (23%) and decreased platelets (5%)
- 8% of patients discontinued treatment permanently. This was most commonly due to keratopathy (2.1%)

Eye problems reported in patients who received the recommended dose of BLENREP included keratopathy (71%), decreased vision (53%), blurred vision (22%), and dry eye (14%).

Eye problems, which can be serious, were common with BLENREP. In 218 patients who received 2 different doses, the following were seen:

- Eye problems occurred in 77% of all 218 patients in the clinical trial. These included keratopathy (76%), decreased vision (55%), blurred vision (27%), and dry eye (19%)
- Among 165 patients who had keratopathy, 49% had eye symptoms, 65% had a clinically significant change in vision, and 34% had both eye symptoms and changes in vision
- Of 149 patients with moderate to severe keratopathy, 39% recovered to mild findings or better after a follow-up of approximately 6 months, and the median time to resolution was 2 months (range: 11 days to 8.3 months)
- Of the 61% who had ongoing keratopathy, 28% were still on treatment, 9% were in follow-up, and in 24% the follow-up ended due to stopping participation, being lost to follow-up, or death
- Of 41 patients who experienced decreased vision of worse than 20/40, 88% resolved, and the median time to resolution was 22 days (range: 7 days to 4.2 months)
- Of 3 patients who experienced decreased vision of 20/200 or worse, all resolved, and the median duration was 22 days (range: 15 to 22 days)

Because of the risk of eye problems, BLENREP is only available through a restricted program called the BLENREP REMS. REMS is a Risk Evaluation and Mitigation Strategy to manage known potential serious health risks associated with a medicine.

*Changes to the surface of your eye found during an eye exam, with or without symptoms, are considered keratopathy.

How do I prepare for my infusion?



- Because of the risk of eye problems, BLENREP is only available through a restricted program called the BLENREP REMS
- Before you receive BLENREP, you must read and agree to all of the instructions in the BLENREP REMS
- Your healthcare provider will explain the BLENREP REMS to you and have you sign the patient enrollment form
- You must be enrolled in the BLENREP REMS and follow the REMS requirements for eye exams in order to receive BLENREP

FURTHER INFORMATION IS AVAILABLE AT BLENREPREMS.COM AND 1-855-209-9188

Tell your healthcare provider about all your medical conditions, including if you:

- Have a history of vision or eye problems
- Have bleeding problems or a history of bleeding problems
- Are pregnant or plan to become pregnant. BLENREP can harm your unborn baby
- Are breastfeeding or plan to breastfeed. It is not known if BLENREP passes into your breast milk

Tell your healthcare provider about all the medications you take, including:

- Prescription and over-the-counter medicines
- Vitamins and herbal supplements

Review your REMS Patient Guide prior to your first infusion

You will need to receive important exams:

- **Eye exam:** Your healthcare provider will send you to an eye specialist to check your eyes before you start treatment with BLENREP
- **Pregnancy test:** Your healthcare provider may do a pregnancy test before you start treatment, as BLENREP may harm your unborn baby
- **Blood cell counts**

IF YOU EXPERIENCE ANY SIDE EFFECTS WHILE TAKING BLENREP,
IT IS IMPORTANT TO CONTACT YOUR HEALTHCARE PROVIDER

IMPORTANT SAFETY INFORMATION (CONT'D)

Before receiving BLENREP, tell your healthcare provider about all of your medical conditions, including if you (cont'd):

- are breastfeeding or plan to breastfeed. It is not known if BLENREP passes into your breast milk. Do not breastfeed during treatment with BLENREP and for 3 months after the last dose.
- BLENREP may affect fertility in males and females. Talk to your healthcare provider if this is a concern for you.

Please see IMPORTANT SAFETY INFORMATION continued throughout and accompanying full Prescribing Information, including BOXED WARNING and Medication Guide.

How is BLENREP given?



Treatment infusions can be administered:

Over at least 30 MINUTES once every 3 WEEKS

- In your oncologist's or hematologist's office or an outpatient clinic
- By intravenous infusion into your vein as a single agent that doesn't need to be combined with other multiple myeloma medications

**Your healthcare provider will decide on the correct dose of BLENREP for you.
The dose is calculated based on your body weight.**

- Premedication with steroids is generally not required before your first infusion. If you experience an infusion reaction, your doctor will pause treatment and resume your dose at a slower rate (infused over a longer period of time) after symptoms resolve. Your doctor may consider premedication, including a steroid, for any future infusions
- Your healthcare provider will decide how many treatments you need
- Your healthcare provider may decrease your dose or temporarily stop or completely stop treatment with BLENREP if you have serious side effects
- If you miss any appointments, call your healthcare provider as soon as possible to reschedule your appointment

IMPORTANT SAFETY INFORMATION (CONT'D)

Tell your healthcare provider about all the medicines you take, including prescription and over-the-counter medicines, vitamins, and herbal supplements.

These are not all the possible side effects of BLENREP.

Treatment experience with BLENREP



During treatment:

Monitor and tell your healthcare provider if you have any symptoms and side effects

- Tell your healthcare provider if you have any vision changes or eye problems during treatment with BLENREP. You will receive an eye exam prior to each dose of BLENREP and for worsening symptoms of eye problems as required by the BLENREP REMS. Eye exams are important, as some changes can happen without symptoms and may only be seen on an eye exam
- Use **preservative-free lubricant eye drops** 4 times each day throughout your treatment with BLENREP as instructed by your healthcare provider. Guidance on using eye drops is provided at eyedropinstructions.com
- Don't wear contact lenses, unless your doctor advises you to. If you normally wear contact lenses, you can plan to use a pair of eyeglasses while taking BLENREP
- Use caution when driving or operating machinery
- Tell your healthcare provider if you have bleeding or bruising during treatment with BLENREP
- Tell your healthcare provider or nurse right away if you get any of the following signs or symptoms of an infusion reaction while receiving BLENREP:
 - chills or shaking
 - redness of your face (flushing)
 - itching or rash
 - shortness of breath, cough, or wheezing
 - swelling of your lips, tongue, throat, or face
 - dizziness
 - feel like passing out
 - tiredness
 - fever
 - feel like your heart is racing (palpitations)
- It is important for patients who are able to become pregnant, and males with female partners who are able to become pregnant, to use effective contraception. Talk to your healthcare provider about birth control methods you can use during this time
- Tell your healthcare provider if you become pregnant or think you may be pregnant during treatment with BLENREP
- Do not breastfeed during treatment with BLENREP and for at least 3 months after the last dose



After treatment:

Talk to your healthcare provider before stopping your contraception

- Males with female partners who are able to become pregnant should use effective contraception for at least 6 months after the last dose of BLENREP
- Patients who are able to become pregnant should continue to use effective contraception for at least 4 months after the last dose of BLENREP

What will happen after an infusion?

A nurse will help you stay on track after your first infusion and throughout treatment by:

Answering any questions you may have.

Discussing any side effects you may experience during treatment.

Reviewing your care plan and strategies to address potential side effects.

Providing you with any prescriptions or referrals from your healthcare provider.

Reminding you of activities you may need to avoid.

Providing you with a schedule for upcoming treatment infusion visits and eye exams.

IT'S IMPORTANT TO TELL ALL OF YOUR HEALTHCARE PROVIDERS THAT YOU ARE TAKING BLENREP

IMPORTANT SAFETY INFORMATION



What is the most important information I should know about BLENREP?

Before you receive BLENREP, you must read and agree to all of the instructions in the BLENREP Risk Evaluation and Mitigation Strategy (REMS). Before prescribing BLENREP, your healthcare provider will explain the BLENREP REMS to you and have you sign the Patient Enrollment Form.

BLENREP can cause serious side effects, including:

Eye problems. Eye problems are common with BLENREP. BLENREP can cause changes to the surface of your eye that can lead to dry eyes, blurred vision, worsening vision, severe vision loss, and corneal ulcer. Tell your healthcare provider if you have any vision changes or eye problems during treatment with BLENREP.

- Your healthcare provider will send you to an eye specialist to check your eyes before you start treatment with BLENREP, prior to each dose of BLENREP, and for worsening symptoms of eye problems.
- Even if your vision seems fine, it is important that you get your eyes checked during treatment with BLENREP because some changes can happen without symptoms and may only be seen on an eye exam.
- You should use preservative-free lubricant eye drops at least 4 times per day during treatment with BLENREP as instructed by your healthcare provider.
- You should use caution when driving or operating machinery as BLENREP may affect your vision.
- Avoid wearing contact lenses during treatment with BLENREP unless directed by your eye specialist.

Decrease in platelets (thrombocytopenia) is common with BLENREP, and can also be serious. Platelets are a type of blood cell that help your blood to clot. Your healthcare provider will check your blood cell counts before you start treatment with BLENREP and during treatment. Tell your healthcare provider if you have bleeding or bruising during treatment with BLENREP.

Infusion-related reactions are common with BLENREP and can also be serious. Tell your healthcare provider or nurse right away if you get any of the following signs or symptoms of an infusion-related reaction while receiving BLENREP:

- chills or shaking
- redness of your face (flushing)
- itching or rash
- dizziness
- feel like passing out
- tiredness

- shortness of breath, cough, or wheezing
- swelling of your lips, tongue, throat, or face
- fever
- feel like your heart is racing (palpitations)

The most common side effects of BLENREP include vision or eye changes such as findings on eye exam (keratopathy), decreased vision or blurred vision, nausea, low blood cell counts, fever, infusion-related reactions, tiredness, and changes in kidney or liver function blood tests. Tell your healthcare provider right away if you get new or worsening unexplained signs or symptoms of lung problems, including shortness of breath, chest pain, and cough.

Before receiving BLENREP, tell your healthcare provider about all of your medical conditions, including if you:

- have a history of vision or eye problems.
- have bleeding problems or a history of bleeding problems.
- are pregnant or plan to become pregnant. BLENREP can harm your unborn baby. **Females who are able to become pregnant:** Your healthcare provider may do a pregnancy test before you start treatment with BLENREP. You should use effective birth control during treatment with BLENREP and for 4 months after the last dose. Talk to your healthcare provider about birth control methods you can use during this time. Tell your healthcare provider if you become pregnant or think you may be pregnant during treatment with BLENREP. **Males with female partners who are able to become pregnant** should use effective birth control during treatment with BLENREP and for 6 months after the last dose.
- are breastfeeding or plan to breastfeed. It is not known if BLENREP passes into your breast milk. Do not breastfeed during treatment with BLENREP and for 3 months after the last dose.
- BLENREP may affect fertility in males and females. Talk to your healthcare provider if this is a concern for you.

Tell your healthcare provider about all the medicines you take, including prescription and over-the-counter medicines, vitamins, and herbal supplements.

These are not all the possible side effects of BLENREP.

What support is available?

Support staff are available to help with your questions and concerns, including:

- What to expect during administration of BLENREP
- What to do if you experience side effects
- Education about multiple myeloma

Together with GSK Oncology offers a variety of patient access and reimbursement resources

- Benefits investigation
- Prior authorization and appeal support
- Cost Savings Plan, for those who are eligible
- Co-pay assistance
- Eye care appointment scheduling and reminder services

WE'RE HERE TO HELP ANSWER MANY OF YOUR QUESTIONS ONLINE: [BLENREP.COM](https://blenrep.com)
BY PHONE: 1-844-4GSK-ONC (1-844-447-5662) FROM 8 AM TO 8 PM ET

REMS resources available to you

In addition to counseling from your healthcare provider, a REMS Patient Guide with education on the risk and management of eye problems is available. Visit [BLENREPREMS.com](https://blenrep.com) or call 1-855-209-9188 for more information.

SIGN UP AT [BLENREP.COM](https://blenrep.com) TO RECEIVE INFORMATION
AND UPDATES FROM THE PATIENT SUPPORT PROGRAM

Trademarks are property of their respective owners.



©2022 GSK or licensor.
BLMBKLT220001 March 2022
Produced in USA. 0002-0018-05



Please see **IMPORTANT SAFETY INFORMATION** continued throughout and accompanying full Prescribing Information, including **BOXED WARNING** and Medication Guide.